

Delaware Valley Eagle Alliance

Nature's Newsletter

Volume 8, Issue 1

www.dveaglealliance.org

2010

EagleFest Edition

Eagles and Ospreys on the Delaware

By Don Hamilton

Natural Resource Specialist, National Park Service
don_hamilton@nps.gov

While not as prevalent as bald eagles on the Delaware River, another large fish-eating raptor that's often seen here, and one that is every bit as good at catching fish, is the osprey.

This long-winged "fish hawk" is brown above and white below. With a largely white head, it may at first glance, cause it to be misidentified as a mature bald eagle. But a closer look reveals a distinctive dark brown "mask" on the side of its face. It is this characteristic, along with the white underside and the long slender wings (4 ½' to 6' wingspan), that help to distinguish it from our national symbol.

Ospreys are our only raptor that plunges *into* the water, feet first, to catch fish. Sometimes seen flying above the treetops up or downriver, they will hover on beating wings when they've spotted a fish within their reach, and plunge feet first, sometimes going completely beneath the surface, to grab the

continued on page 3



Bald Eagle Landing (top) ©2010 John A. DiGiorgio, Photographer
Osprey Landing (bottom) © 2010 Steve Byland , Photographer

INSIDE THIS ISSUE

- 1 Eagles and Ospreys on the Delaware
- 2 Historic 4-Chick Bald Eagle Nest
- 2 Chick Development
- 3 Mid-Winter Bald Eagle Survey; Eagle Facts
- 4 EagleFest Featured Artist Posters;
About The Delaware Valley Eagle Alliance

Historic 4-Chick Bald Eagle Nest

The Delaware Valley Eagle Alliance announces the successful fledging of four bald eagle chicks from a nest along the Delaware River in Northampton County, PA.

Directors, John and Yoke DiGiorgio began recording their observations and documenting, through photography and documentary film, starting the first week in April 2009. The first chick was observed that first week in April. The fourth chick was observed and documented on April 27, 2009. PA Game Commission was notified and provided with documentary film confirming the historic event.

Clutch size in bald eagles generally varies between 1 and 3, with 2 being the most common. Reports in the literature of 4-egg clutches are very rare, with some suggesting that they Resulted from two females laying eggs in the same nest. In 1986 on the Chesapeake Bay, a 4-egg clutch was successful with no sign of an extra female. An account was never published.

The DiGiorgios have completed capturing fourteen weeks of footage documenting this historic event, from the time that the 4 chicks were first observed through several weeks after they fledged (first flight).

John DiGiorgio stated that, based on when we first observed the appearance of each of the chicks, we estimated that there was a one and a half to two week age difference between the oldest chick and the youngest chick. Chick #1 was visibly larger and more developed than the younger three and chick #4 was visibly smaller and less developed than the older three. This remained the case up until they fledged.



©2010 Photographs by John A. DiGiorgio (top) and Greg Giorski (bottom)

CHICK DEVELOPMENT

- For the **first two weeks** chicks are covered in white down and depend on the adults for warmth.
- **By 2-3 weeks**, chicks are covered in gray down and are more able to regulate their temperature. When the chicks are young typically the male does most of the hunting. Chicks are not yet able to tear the prey and are fed regularly by both adults.
- **By 3-4 weeks**, flight feathers are just appearing. Chicks may eat as much as 2 lbs per meal. Growth is rapid.
- **By 5-6 weeks**, chicks are developing coordination and are more active and playful. They may grab at adults to get food.
- **By 7 weeks**, chicks are proficient at moving around the nest. The adults typically spend less in the nest and may perch on branches in the nest tree or neighboring trees.
- **By 8 weeks**, chicks are nearly adult size. Coordination is improving and body posture is more erect. Chicks are able to tear prey and feed themselves.
- **By 9-10 weeks**, chicks exercise flight muscles and learn to control lift in preparation for their first flights. This includes taking to the support branches of their nest tree.
- **Fledging** typically occurs between **10-12 weeks**. Chicks remain dependent on the adults for food for several weeks after fledging.
- **Now called juvenile bald eagles, it will take them 4-5 years to reach full adulthood,**

Feeding this 4-chick brood was a time consuming activity and involved both adults. DiGiorgio recalls filming on a particular evening in May where, over a two and a half hour time span, the adults brought in a total of five fish and fed the chicks continuously. The chicks formed a semi circle around the adult and were each fed a small portion of the fish at a time. The adult would then move to the next chick, and the next, and the next and return to the first to start again. The adults did not appear to favor one chick over another. All were fed, even the youngest. Very little aggressive behavior between the chicks was observed prior to fledging, even during feeding.

Fledging occurred during the 3rd week in June with chick #1 fledgling first, chicks #2 and #3 fledgling two days later and finally chick #4 three days after that.

A documentary film is being developed. The DiGiorgios are also collaborating with Dr Bryan Watts, Director, Center for Conservation Biology to co-author a research paper that documents this rare event. The paper will present an account of this nesting event in the context of current thought regarding limitations on clutch and brood size in bald eagles. **Dr. Watts has monitored more than 6,000 nesting attempts by bald eagles and has never recorded a 4-chick brood. He states that "it is truly incredible for such an exceedingly rare event to be so well documented"**.

Mid-Winter Bald Eagle Survey

New York State will once again be participating in the national mid-winter bald eagle survey. The survey, now in its 32nd year, is coordinated by the U.S. Army Corps of Engineers out of their San Francisco office, in partnership and with assistance from the previous coordinators at the Biological Resources Division of the U.S. The survey, which occurs the first half of January, is conducted via several aerial surveys over major portions of the state.

This year's survey is especially important as the 2010 survey marks the next scheduled update for a comprehensive 25-year national and regional trend analysis using the 1986 – 2010 dataset.

More information on the National Mid-Winter Eagle survey, including specific results for NYS, can be found at: <http://ocid.nacse.org/nbii/eagles/>. This website currently provides public access to the dataset used in the 1986-2005 trend analysis, as well as to regional and statewide trend analyses. This public access website will be updated with the 1986-2010 dataset and trend analyses as they become available.

Last year, January 2009, New York State results were 401 total bald eagles, with 241 adults and 160 immatures. This was less than in January 2008 when the statewide tally set an all time high record of over 500 counted for the first time ever. The NYS DEC annual statewide bald eagle report can be found at: <http://www.dec.ny.gov/animals/9381.html>

New York State continues to provide consistent over-wintering habitat for one of the largest bald eagle populations in the northeast US. Observations confirm the importance of the wintering areas, not only to resident New York State bald eagles, but to numerous eagles from eastern Canada (as confirmed by DEC's extensive migration tracking studies). These studies have not only documented the migratory timing and pathways of these eagles, but demonstrated the long-term fidelity of these eagles to these particular wintering grounds.

DEC continues to pursue research and monitoring of several major populations of wintering eagles in New York, including capture, banding and satellite tracking. The focus for wintering eagle research had shifted to the Upper Delaware River, where a multi-year study had been launched in partnership with the National Park Service. This study included breeding eagles in this area and their young, basically to define essential habitats used by eagles along the Upper Delaware.

For more information go to: <http://learner.org/jnorth> or <http://www.dec.state.ny.us>.

* Information & statistics provided by Peter Nye, NYS DEC

The Delaware Valley Eagle Alliance

For more information contact us at:

www.dveaglealliance.org

JYD630@aol.com 845-252-6509



©2010 John A. DiGiorgio, Photographer

Eagles and Ospreys on the Delaware (continued)

fish. I once witnessed such a catch while watching an osprey fish in an inland marsh at Point Reyes National Seashore in California. Stopping mid-flight, hovering in place momentarily, plunging and disappearing completely beneath the surface, it emerged two seconds later, flapped its wings and flew off with its catch.

There aren't any osprey nests that we're aware of along the Upper Delaware River, as they usually prefer to nest on a larger body of water, such as the nearby Bashakill wetlands in Orange County, New York, or Lake Wallenpaupack in Pike County, PA. But ospreys often venture up the Delaware River on fishing trips, and interactions with our bald eagles here are not uncommon.

A few years ago I watched an immature bald eagle, flying downriver with a fish, being harassed in flight by an osprey. The osprey swooped down on it from above, trying to get the eagle to drop its catch. And each time it did, the immature bald eagle, knowing precisely where the osprey was, rolled over in mid-flight and presented its talons towards the osprey, defending itself from this bandit. The osprey soon gave up, and the young eagle flew off to perch in a tree, and eat its meal.

Eagles themselves are known to go after other birds (e.g. ospreys, great blue herons) in an attempt to steal their catch. These interactions seldom result in harm to the other birds, but often provide an easy meal for the opportunistic aggressor.

EAGLE FACTS

- Height: 30-31", Wing Span: 6'-7'6", Weight: to 14 lbs, Life Span: 25 – 30 years.
- Mated bald eagles are monogamous.
- Female bald eagles are larger than the males.
- Typically lay 2 - 3 white eggs in a massive nest of sticks in a tall tree.
- Can fly 36 – 44 miles per hour.
- Can spot a fish up to 3 miles away.
- With eyes almost as big as a human's, bald eagles also have color vision.
- Juvenile bald eagles resemble Golden Eagles, require 4 – 5 years to reach full adulthood, have a longer tail and wider wings than adults.
- Snatch fish with their talons.
- Have special pads on the soles of their feet, especially designed to firmly grip a slippery wriggling fish.
- Each foot has four toes, three pointing to the front and one to the rear, ending with razor sharp black talons up to two inches long.

EAGLEFEST FEATURED ARTIST POSTERS

EAGLEFEST 2010



With a donation of \$30 (plus shipping and handling), you will receive a limited edition 16 by 20 poster created by:

Heidi Morse - Featured Artist EagleFest 2010.

The Delaware Valley Eagle Alliance

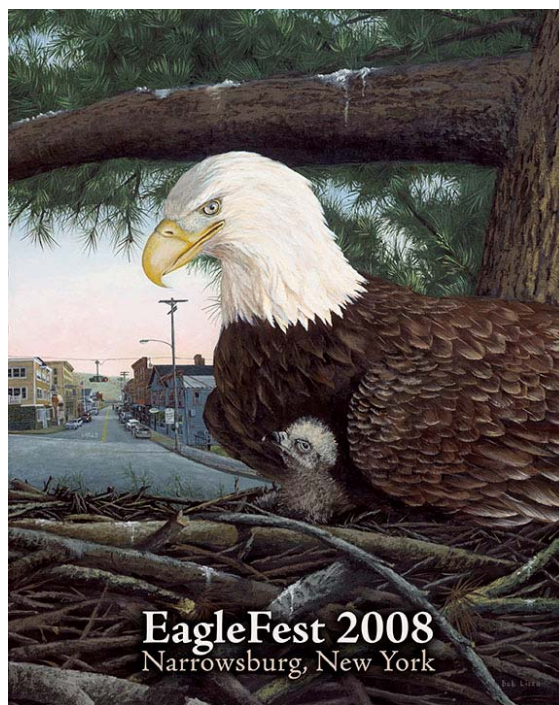
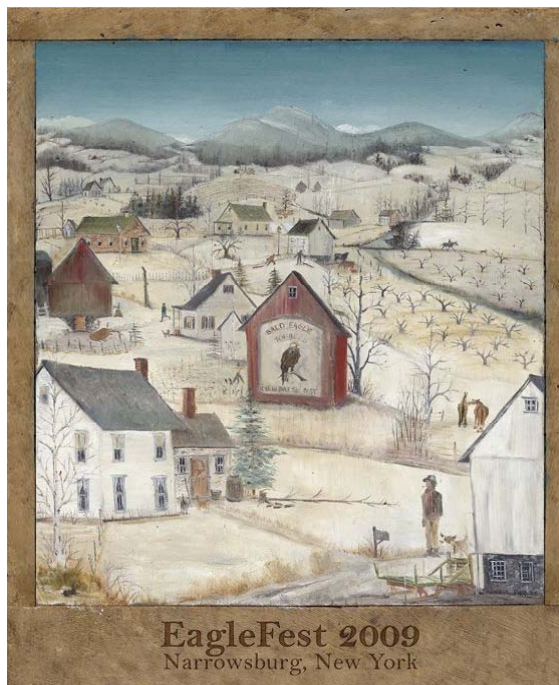
Our mission: to increase awareness, understanding and promote conservation of our wildlife and natural environment.

**Educational
Events, Programs and Publications**

The *Delaware Valley Eagle Alliance* is a 501(c)(3) not-for-profit organization. All events and programs are funded by your generous donations. If you would like to make a donation, please send your "tax deductible" check, payable to the *Delaware Valley Eagle Alliance* to:

PO Box 498
Narrowsburg, NY 12764

OTHER AVAILABLE POSTERS



With a donation of \$30 (plus shipping and handling), you will receive a limited edition 16 by 20 poster created by:

Cheryl Korb - Featured Artist EagleFest 2009 or
Robert Lizza – Featured Artist EagleFest 2008

FOR MORE INFORMATION Visit our website at: www.dveaglealliance.org E-mail us at: jyd630@aol.com

Yoke Bauer DiGiorgio, Editor-in-Chief



The Delaware Valley Eagle Alliance
welcomes you to the 9th annual

EAGLE FEST
NARROWSBURG, NEW YORK
Saturday, January 17, 2009
9:30AM – 4:30PM

**Live bird demonstrations, observation sites, guest lectures,
films, poster auction, eagle art**
(snow or shine)

Wildlife and environmental conservation and preservation are challenges that touch all of us. Combining entertainment and education for all attending, the award winning Narrowsburg NY “EagleFest” is an event for everyone to be proud of! Successful in bringing local residents and out-of-town visitors of all ages to the day’s multi-faceted series of activities, it brings much deserved attention to the natural resources that enrich our lives in the Delaware River Valley region.

The Delaware Valley Eagle Alliance, founder and organizer of EagleFest, is committed that EagleFest continue its focus – a program of education and entertainment. Each year the event is enhanced with new speakers and presentations providing all attending opportunities to see and experience new and interesting programs. Because of the generosity of sponsors and supporters, many of the programs are free of charge.

We welcome you to EagleFest!

The Delaware Valley Eagle Alliance

Founding Sponsors

Narrowsburg Chamber of Commerce
Nature’s Art LLC

Corporate Sponsor

Catskill Hudson Bank

Sponsors

Lawrence & Rachael Fine and Thuy Nguyen
High Point Scientific Inc
Lang Industries
Martco Management Corp
Narrowsburg Fine Wines and Spirits
Rasmussen Furniture
The First National Bank of Jeffersonville

Supporters

Alice’s Wonderland
Atelier Homme
Central House
Richard and Betty Crandall
Delaware & Hudson Canvas
ECCE Bed and Breakfast
Enochian Inc
John F. Hector, Attorney at Law
Honesdales National Bank
Matthew J. Freda Real Estate
Milford Journal

Supporters (continued)

Narrowsburg Motor Sales Inc
Narrowsburg Liquors
Narrowsburg Roasters
Oellrich & Behling, Inc. (Peck’s Market)
River Reporter
River Gallery, The Art of Living
Villa Roma Resort
Whistle Stop Café
Woodloch Pines Resort
Woodstone Lakes Development, LLC

We thank our Officers, Committee and many Volunteers

EAGLEFEST PROGRAM SCHEDULE

<u>TIME</u>	<u>ACTIVITIES</u>	<u>LOCATION</u>
8:30am	Pre-Opening Festival Music Program by Bob Lohr	School Auditorium
9:30am	Opening Festival Dedication – Introductions, Children’s Art Contest Winner Awards, Sponsor & Supporter Recognitions	School Auditorium
10:30am	“LIVE Birds Of Prey” Program by Bill Streeter, The Delaware Valley Raptor Center (50min), \$2.00 Donation	School Auditorium
11:00am	“Ecological Footprint – How Can We Help” by Jason Porter, University of the Sciences in Philadelphia (45 min)	School Classroom
11:00am	MOVIE “Return of the Raptor” (30 min)	Tusten Theater
12:00pm	Lost Species: The Ivory-billed Woodpecker by Ronald Rohrbaugh, Conservation Science Program: Cornell Lab of Ornithology, (45min)	Tusten Theater
12:30pm	Mid-day Festival Dedication – Introductions, and Sponsor & Supporter Recognitions (30min)	School Auditorium
1:00pm	“LIVE Birds Of Prey” Program by Bill Streeter, The Delaware Valley Raptor Center (50min), \$2.00 Donation	School Auditorium
1:00pm	“Eagle Updates,” hosted by Don Hamilton, NPS with Speakers: Eric Stiles, New Jersey Audubon and Pete Nye, NYS DEC (60 min)	Tusten Theater
1:30pm	“Ecological Footprint – How Can We Help” by Jason Porter, University of the Sciences in Philadelphia (45 min)	School Classroom
2:00pm	“Owl Conservation Initiatives” by Richard Fritsky, Biologist PA Game Commission. (45 min)	Firehouse
2:30pm	“LIVE Birds of Prey” Owl Program by Lauren Butcher, The Raptor Trust, NJ, (50min) \$2.00 Donation	Tusten Theater
3:00pm	“Landbird Migrations” by Robert Smith, Univ.of Scranton, PA (45min)	Firehouse
3:00pm	“LIVE Birds of Prey and Other Species” Program by Kathy Uhler, The Pocono Wildlife Rehabilitation Center (50min) \$2.00 Donation	School Auditorium
4:00pm	Inside Look at Bird Rehabilitation with “LIVE Birds of Prey” by Lauren Butcher, The Raptor Trust, NJ, (50min) \$2.00 Donation	Tusten Theater
4:30pm	Poster Auction <u>Final</u> Silent Bid, Poster Pick-up	Margo Spoerri Studio

ONGOING ACTIVITIES AND EXHIBITS

- | | |
|--|--|
| • Eagle Viewing | Viewing Deck, Main St |
| • Exhibits by Regional Conservation Groups | Town Hall, Bridge St |
| • Honeybee Exhibit and Demos by Sullivan County Beekeepers | Narrowsburg School Classroom (Bridge St & Kirk Rd) |
| • Wood Carving Demonstrations by Masters of the Chainsaw | Town Hall, Bridge St (11:00am, 1:00pm & 3:00pm) |
| • Ice Sculptures by Sculpted Ice Works | Viewing Deck, Main St (12:00pm & 2:00pm) |
| • Snowshoeing Demos by Northeast Wilderness Experience | Athletic Field, Kirk Rd by Bridge St |

ART EXHIBITS

- WILDLIFE Photography by John A DiGiorgio (Delaware Valley Arts Alliance Gallery, Main St)
- Featured Artist – Heidi Morse – Posters on Sale (School Auditorium and River Gallery, Main St)
- Silent Eagle Art Poster Auction (Margo Spoerri Studio, Main St)

MOVIES (Firehouse, Bridge St)

- 12:00PM** “Life on the Delaware” (60 min)
1:00PM “Wetlands”- ecosystems benefiting people and nature (30 min)
4:00PM "American Bald Eagle Heritage on the Wine" (40 min)

4rd Annual “NATURE and WILDLIFE ART SHOW”

Narrowsburg School Cafeteria and School Library (corner Bridge St & Kirk Rd)

Nature and wildlife artists display and sell their art work. Subject matter includes all nature subjects - landscapes, flora, and fauna.

CHILDREN’S PROGRAMS

(Western Sullivan Public Library, Bridge St)

- 12:00PM** “Adventures of Christopher Otter” by John and Teresa Crerand (50 min)
1:00PM “Farmers Garden – Interactive Puppet Show” by Ed Wesely (30 min)
2:00PM “Eagle Storytelling and Crafts” by Maureen Cookingham (ongoing 2 hrs)

ABOUT THE PRESENTORS AND PROGRAMS

LIVE BIRDS OF PREY PRESENTERS:

Lauren Butcher, The Raptor Trust, Millington, NJ

Lauren Butcher has been associated with the Raptor Trust for six years as a volunteer, seasonal staff member, and, most recently, as their full-time educator. She has a graduate degree from Rutgers University, where she studied the development of amateur ornithology in the US and taught nature writing. The Raptor Trust is one of the premier, privately funded wild bird rehabilitation centers in the United States. Located in southeastern Morris County, NJ, the facility includes a hospital with state-of-the-art medical equipment, outdoor aviaries that can house several hundred birds, and an education center. The Trust's dedicated staff cares for over 3,000 injured and orphaned birds each year, with the primary goal of releasing as many as possible back into the wild.

Bill Streeter, The Delaware Valley Raptor Center (DVRC)

DVRC, located in Milford, Pa is a tax-exempt publically supported membership organization dedicated to the rehabilitation and conservation of birds of prey. DVRC's goal is to provide humane professional care for orphaned, ill and injured raptors so they can ultimately be returned to the wild, healthy and no longer dependent upon humans for survival. This goal is also accomplished by the use of public education programs, promoting increased awareness of raptors and their importance in wildlife communities. Bill graduated from Lafayette College in 1974 with a B.A. in Biology and from the University of Massachusetts in 1977 with an M.S. in Zoology. Bill has been working with birds of prey and as an educator in the environmental science field since 1980.

Kathy Uhler, Director, Pocono Wildlife Rehabilitation and Education Center, Stroudsburg, PA

Kathy is the founder and Director of Pocono Wildlife Rehabilitation and Education Center. Founded in 1980, the Pocono Wildlife Rehabilitation and Education Center, became a non-profit organization in 1988. It is a place where injured and orphaned wild animals are cared for until they can fend for themselves, when they are released back to the wild. In addition, they offer live wildlife educational programs using animals not releasable to the wild. Kathy earned her MS in Biology from East Stroudsburg University of PA with a concentration in Wildlife Disease. She will be presenting six live birds of prey and two small mammals.

CONSERVATION PRESENTERS:

Richard Fritsky, Wildlife Diversity Biologist with the Pennsylvania Game Commission.

Richard Fritsky received his Master's in Wildlife Science from Penn State University and his Bachelor's from Rutgers. As a Diversity Biologist, Rich's primary duty is to identify and improve habitat for species of conservation concern. Over the past two years he has also led the Barn Owl Conservation Initiative in north-eastern Pennsylvania, where he has personally banded over 60 barn owls, installed dozens of nest boxes, and regularly monitors over 70 potential nest sites. His other duties include banding Canada geese, wood ducks, wild turkeys, and bats, and tagging black bear and white tailed deer.

Donald Hamilton, Natural Resource Specialist, National Park Service, Beach Lake, PA

Originally from northern Michigan, Don Hamilton's career has taken him to parks in Michigan, California, New Jersey and Pennsylvania. He was instrumental in developing a funding proposal that will enable a three-year study, in cooperation with NYSDEC, to determine the most important habitats for bald eagles on the upper Delaware River.

Peter Nye, Leader Endangered Species Unit, Wildlife Diversity Group, NYSDEC

Peter Nye has been with the NYSDEC since 1974 in charge of endangered species programs since 1977, in charge of bald eagle restoration programs since its inception in 1976. He has climbed more than 1,000 eagle nesting trees and many he probably shouldn't have. He has banded over 800 eagles to date, and he is still young enough to hit over 1,000 before he retires. He will share his challenges and findings and discuss how the future looks.

CONSERVATION PRESENTERS (continued):

Jason A. Porter, Visiting Assist Professor, Dept of Biological Sciences, University of the Sciences (USP) in Philadelphia, PA

Jason Porter is an instructor of biology, microbiology and ecology at USP, and volunteer and committee member at the Lacawac Sanctuary, a non-profit nature preserve on the Pocono Plateau in PA. Individuals can lessen their impact on the earth's resources by living in a more sustainable manner. an important tool for understanding this impact is the "ecological footprint", a quantitative measure of the impact an individuals lifestyle has on the resources available. Jason will be talking about, and demonstrating, how individuals can calculate their footprints and understand why sustainable living is an important goal for all of us to strive to achieve.

Ron Rohrbaugh, Assistant Director of Conservation Science at the Cornell Laboratory of Ornithology, Ithaca, NY

A Lost Species: The history, ecology, and status of the Ivory-billed Woodpecker. Ron Rohrbaugh will tell the story of the Ivory-billed Woodpecker through the eyes of history, human culture, and science. You'll learn how Native Americans revered the ivory-bill, how settlers viewed it with awe, and how the species was driven nearly to extinction through collecting and habitat loss. Ron received his B.S. in Wildlife and Fisheries Science in 1989 and M.S. in Wildlife Science with a Minor in Ecology in 1994, both from Pennsylvania State University.

Dr. Robert Smith, Associate Professor of Biology, The University of Scranton, Scranton, PA

Dr. Robert Smith is an Associate Professor of Biology at The University of Scranton, Scranton, Pennsylvania, where he teaches courses in Vertebrate Biology, Comparative Vertebrate Anatomy, Ecology, Conservation Biology and Animal Behavior. Dr. Smith completed a M.S. in Conservation Biology at Central Michigan University and a Ph.D. in Biology from the University of Southern Mississippi. He has been studying the ecophysiology and behavioral ecology of migratory birds for over 16 years. His research, which includes both basic and applied elements, is focused on identification and evaluation of stopover habitat for migratory landbirds as well as linkages between the migratory and breeding periods of the avian annual cycle.

Eric Stiles, Vice President Conservation and Stewardship, NJ Audubon, Bernardsville, NJ

Eric Stiles joined the NJ Audubon in 2002. Under his direction, the Conservation Department is directly involved in managing and protecting New Jersey's native plant and animal populations through policy and advocacy work, stewardship, and the development of programs such as the Birding and Wildlife Trails and Important Bird Breeding Areas. While these specific tasks have a state-wide focus, the Conservation Department also works to provide guidance to individuals on a more local level. Eric and his team have created a variety of documents that help direct concerned citizens in the fight against bad development or the preservation of local plant and animal communities and critical resources. Prior to joining NJ Audubon, Eric was the Landscape Ecologist and Project Manager at the Worcester Regional GIS Program in Maryland, and prior to that, he worked as the Senior Zoologist for the NJ Division of Fish and Wildlife's Endangered and Non-game Species Program.

www.njaudubon.org/conservation

FEATURED ARTIST:

In Memory of Heidi Morse, Narrowsburg, NY

This year, the Delaware Valley Eagle Alliance wishes to salute the artistic legacy of Heidi Morse, an artist whose work first captured our imagination in 2004. Heidi's career began at Parson's School of Design, where she studied illustration. After receiving her degree, Heidi worked with Jarvis Boone, a wood carver, in the artisan village of Sugarloaf, New York. Over twenty years ago, she joined the Narrowsburg community and has been a vital and valued member of the community, creating paintings and signs for local homeowners and businesses. Heidi could not be part of this year's EagleFest, but her artwork and her indomitable spirit will remain with us for many years to come.

ABOUT THE PRESENTORS AND PROGRAMS (continued)

PHOTOGRAPHY EXHIBIT:

**John DiGiorgio, Photographer, Nature's Art LLC,
Rockaway, NJ and Narrowsburg, NY**

An accomplished fine art and wildlife photographer, John A. DiGiorgio has been capturing intimate images of American culture for nearly 40 years. His photography has included such projects as: Native Americans of the South West; Ellis Island Unseen; Spirit of the Wolf; The Alaskan Grizzly; Portraits of the Bald Eagle; and A Love Affair With Nature. For this exhibit, "Love of Nature", John collected a range of images to represent his love of nature and wildlife. The human element and the spiritual aspects of nature are what inspires my photographs," explains DiGiorgio. "Photographing in both black and white, and color has allowed me the versatility to pick my subjects out of my travel and life experiences."

EXHIBITS AND DEMONSTRATIONS:

Bob Davis and Don Bertholf Jr, Sullivan County Beekeepers.

Bob has been keeping honeybees for 12 years and Don for 9 years. Bob first became interested in beekeeping because he observed fewer and fewer honeybees in the area. When Don moved to the area a couple of years later, he began to assist Bob. What started out as 2 colonies has now grown into 37 colonies. The colonies are located in eight different yards around the county. This past year they were able to extract over 1500 lbs of honey. Bob and Don will have presentations on the life cycle of the honeybee and discuss spring management, honey production, and over wintering honeybee colonies in Sullivan county. Videos on honeybees will be shown all day. In addition, local honey will be on display and honey tasting will be available.

Chad Gasiorek, Sculpted IceWorks, Tafton, PA

Chad was introduced to ice carving through the culinary field. He is currently a pastry arts teacher at Sussex Tech, in Sussex County, New Jersey and a sculptor for Sculpted Ice Works, Inc, Lakeville, PA. Chad has competed in the Salisbury, CT, ice carving competition; the Stowe, VT carving competition; and Crystal Cabin Fever carving competition and recently the Bronx Zoo Tribute to Wildlife Competition. In 2008 he earned second place at Crystal Cabin Fever carving competition. Most recently he earned a first place, and a Silver NICA medal in last year's Crystal Cabin Fever Competition. Chad resides in Shohola, PA.

Brian Ruth, Masters of the Chainsaw

Brian is a self taught World Champion sculptor, with over 28 years of extreme art experience and holding many carving champion titles. His most recent awards include 1st Place Judges Choice, as well as Peoples Choice, at a carving competition in Germany this summer. Brian established the Masters of the Chain Saw in 1992 with the focus to represent only the finest professional chainsaw saw sculptors. Masters of the Chainsaw carvers now number 13 exclusive members and 36 part time members. It is the only agency in America devoted exclusively to chainsaw art. Each of the three 45-minute shows (scheduled for 11:00AM, 1:00PM and 3:00PM) by Town Hall will result in a carving being produced from start to finish. The carvings will be available for purchase from the Masters of the Chainsaw.

EXHIBITS AND DEMONSTRATIONS (Continued):

**Dan Corrigan, Northeast Wilderness Experience,
Beach Lake, PA**

Established by Dan and Jessica Corrigan., Northeast Wilderness Experience is committed to the "leave no trace" ethics for all of their outdoor experiences. Trips offered provide adults and children with knowledge of the outdoors and environmental preservation. Snowshoeing demonstrations will be given by Dan Corrigan, who will be located by the Athletic Field (on Kirk Rd by Bridge St). Dan comes equipped with 20 + shoes available for demo from Atlas snowshoe company.

CHILDREN'S PROGRAM (Western Sullivan Public Library):

Maureen Cookingham Western Sullivan Public Library

Maureen Cookingham is a volunteer at the Western Sullivan Public Library at Narrowsburg and will be doing eagle storytelling and crafts.

**John and Teresa Crerand, "The Adventures of Christopher
Otter"**

John Crerand is a PA native and avid sportsman with extensive knowledge of wildlife behavior. He brings his audience to a woodland setting and home of a river otter named Christopher and the animals and environment in which they interact. He will read from the first series of five stories that teach family values, sharing, learning, helping others, and teaching life's lessons.

Stressing the importance of reading to learn and sharing that knowledge with others, he encourages children to read and inspires adults to read to children. The husband and wife (Teresa) team use hand puppets to educate children about good values, respect for others, and animal behavior along with a bit of a history lesson. Children learn about nature, its inhabitants and how they interact with each other, and that it is okay to be different.

Ed Wesely, Director, Butterfly Nature Center, Milanville PA

Ed Wesely has been directing children's puppet plays for the Delaware Highland Players since 1996 - on site at the Butterfly Barn; at various area schools; and at the Christmas Open House hosted by Highlights for Children magazine.

PRE-FESTIVAL MUSICAL PROGRAM:

Bob Lohr, Musician, Narrowsburg, NY

Bob and his lovely wife, Penelope, came to Narrowsburg in 2004 and count themselves extremely fortunate to call such beautiful place home. Born and raised out west in Colorado where he attended Montrose County High School and Western State College of Colorado in Gunnison, he is an appreciator of wildlife, small town life, and nature in general.

The Delaware Valley Eagle Alliance

a 501(c)(3) not-for-profit organization

dedicated to increasing awareness, understanding and promoting conservation of our wildlife and natural environment.

For more information about the Delaware Valley Eagle Alliance:

E-mail: jyd630@aol.com or Visit our Website: www.dveaglealliance.org

If you would like to make a donation, please send your "tax deductible" check, payable to the Delaware Valley Eagle Alliance to:
PO Box 498, Narrowsburg, NY 12764